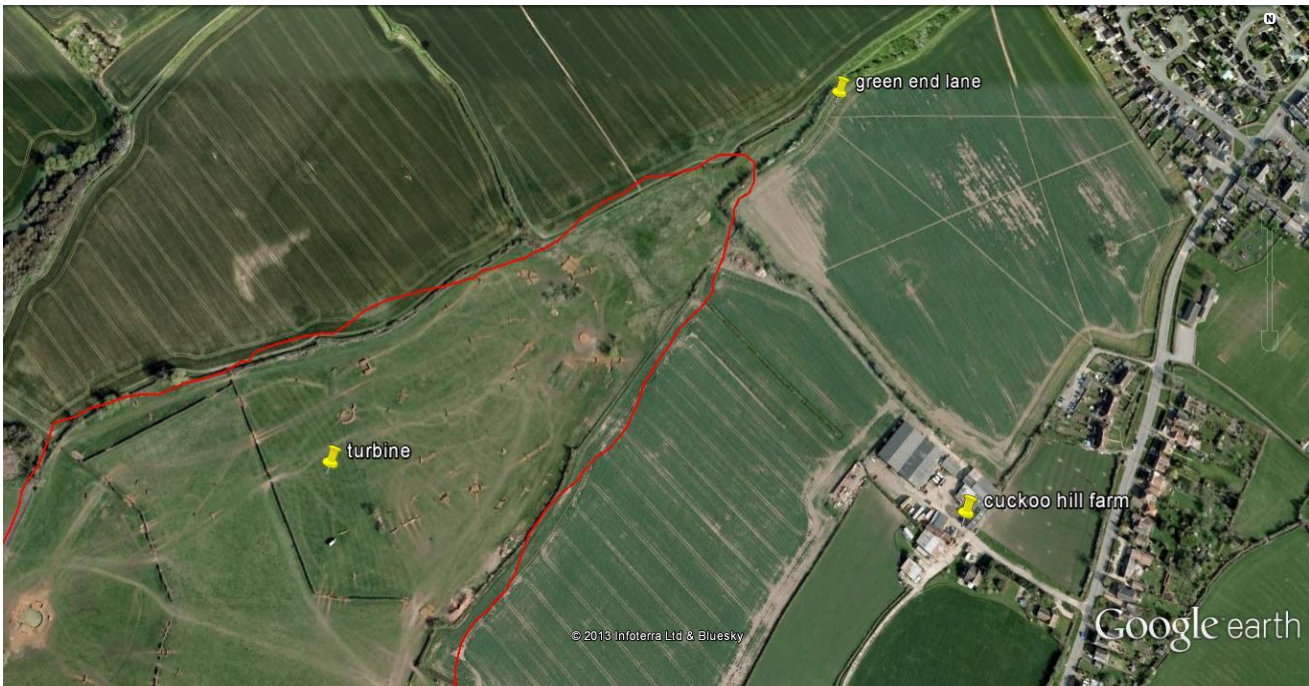


Wind Turbine at The Eventing Centre

THE FACTS



- The Site is only suitable for 1 medium sized turbine
- At least 500m from nearest bridleway and 100m from footpath
- 550m from nearest house and 700 m from the village
- Fiona & Steve Gifkins own the land – owner funded project and insurance guaranteed.
- Circa £20k per annum pledged to Village Charity for life of the turbine
- The Event Centre will continue to operate the yard and training
- Approximately 19 days of large outdoor events will no longer run, easing traffic in local villages by 2500 lorries per year.
- Local contractors used when possible
- Fully insured project ensuring all planning regulations met
- Commitment to allow villagers access to the land for recreational use
- Plan to create a nature reserve type environment

Please feel free to email any questions and we will be very happy to talk with you

Email - stevegifkins@yahoo.co.uk