

# **HANSLOPE PARISH COUNCIL** **SEPTEMBER 2011 NEWSLETTER**

## **HANSLOPE PARISH COUNCIL** **INCOME AND EXPENDITURE 2010-2011 IN £**

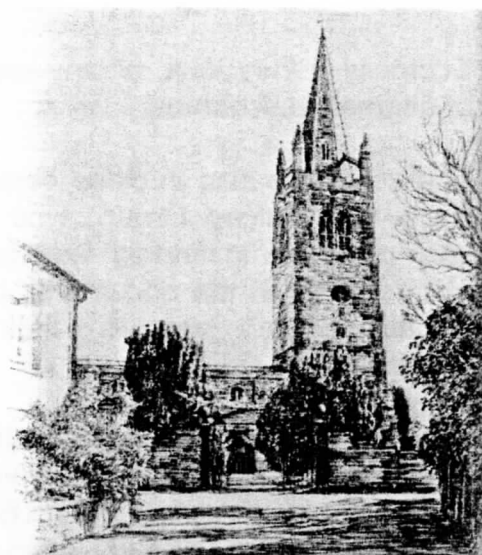
ITEM	EXPENDITURE	INCOME
Precept		39690
Recreation Ground	14077	1420
Allotments	789	1194
Highways	2855	
Newsletter	416	
Donations	4425	
Administration	4310	
Insurance	2045	
Salaries	6104	
Projects; New fence in recreation ground	820	
NAG Funds		157
TOTALS	35841	42461

**HANSLOPE PARISH COUNCIL**  
**THE OCTOBER OPEN MEETING IS**  
**MONDAY 10<sup>th</sup> OCTOBER 2011**  
**7.30 PM IN THE VILLAGE HALL**

### **UPDATE ON PLANS FOR NEW COMMUNITY AND SPORTS CENTRE:**

We are continuing to work closely with the architects in drawing up draft plans to take account of the needs of all potential users. As this goes to print we will be meeting again with the architect and hope to agree draft plans which will be presented to you at the October Open Meeting - see separate details.

An application for some funding was successful and we now have sufficient funds to proceed to the Planning Application stage. This is still all at



an early stage, but it is vital every effort is made to get the design the best we can, and to that end we are making good progress.

*Carol Hayward*

### **UPDATE ON THE PROPOSED WIND FARM AT STOKE HEIGHTS**

The 'Parish Poll' about the Stoke Heights Wind Farm, resulted in a majority of residents (83% of responders) stating their objection to this development and a majority agreeing to contribute to a Parish 'fighting fund'. If required this will be used to fund any expertise required to help oppose a planning application (with the amount to be recovered via the Parish Precept). Subsequently the developers Ecotricity, as expected, pressed ahead and submitted a planning application to Milton Keynes Council.

After studying the Ecotricity application, Hanslope Parish Council, submitted a formal letter of opposition setting out in 17 argued points why this development should not be allowed. The date for the planning hearing has not been finalised as this newsletter went to press, but it is believed that it will be in mid October – more details will be available at the 'Open Meeting' on 10 October.

In the meantime Hanslope Parish Council is meeting with other Parish Councils that will similarly be affected by this proposed development, in order to discuss strategy as regards not only the existing planning application, but any future appeals by

Ecotricity if they lose, or any resubmissions of alternative schemes.

The council is also in close contact with the Save Our Salcey Group, who have been very proactive in finding experts to dispute claims made in the documents produced by Ecotricity to support their planning application.

While none of the Hanslope fighting fund has been committed yet, this planning fight is expected to be prolonged (Ecotricity for example, have already requested and received information on how the Parish Poll was conducted). Where possible Hanslope Parish Council will combine what limited funds that are available with that raised by such as other Parish Councils to form a united front to oppose this development.

## **DON'T LOSE YOUR VOTE IN 2012**

Voter registration forms will soon be dropping through letterboxes across Milton Keynes and you are being urged to return yours as soon as possible to make your voice heard in Borough Council and Parish Elections in 2012.

Electoral Registration Officer, John Moffoot said: "Registering to vote is very simple. All you have to do is update the annual canvass form with the details of everyone in your household who is eligible to vote and return it to us as soon as possible. If the details have not changed, then you can confirm this by using the internet, free phone or text number printed on your form, or by signing and returning the form. You must respond to the form whether or not it needs updating."

Some people may not realise that they have to register every year. "It is important that you complete and return the registration form so you're able to take part in the upcoming elections." For more information contact your local Electoral Registration Officer on 01908 254706 or e-mail [elections@milton-keynes.gov.uk](mailto:elections@milton-keynes.gov.uk).

## **OTHER ISSUES**

### **Litter**

Keeping the village neat and tidy is an ongoing problem and the Parish Council would like to thank those villagers who take it on themselves to be pro active in this matter and help by picking up and disposing of litter when the opportunity arises.

### **Dog fouling**

Three dog waste bins have been installed by the Parish Council (funded by the Neighbourhood Action Group). Please make full use of these and keep our footpaths and grass verges child friendly areas. HOTSPOTS; Hartwell Road and the footpath behind Western Drive which leads up to Castlethorpe Road (where there is a new dog waste bin) are very bad areas. Please scoop the poop! Please keep our village clean and tidy, clean up after your animals.

### **Village Fayre**

The Parish Council on behalf of all local residents and organisations would like to thank 'The Friends of Hanslope' for all their hard work in making the Fayre, held on 10 September such an enjoyable occasion. It was a pleasure to see so many village folk and extended family members attending and making the most of the facilities, rounded off by a lovely firework display. Thank you very much.

### **New Parking Area**

The Parish Council in conjunction with Milton Keynes Council will be installing extra parking in the form of a lay bye to replace the grass verge outside the recreation ground. This will be ideal for weekend overflow parking for cricket and football matches and weekday parking for the doctor's surgery.

### **Posters re Village Events,**

It would be appreciated if posters advertising forthcoming village events could be taken down as soon as possible after the event. The Parish Council notice board is also available to local organisations and clubs.

**Published by Hanslope Parish Council.**

**13<sup>th</sup> June 2011**

**Telephone 01908 290459**

**E-mail:**

**[hanslopeparishcouncil@hotmail.com](mailto:hanslopeparishcouncil@hotmail.com)**